

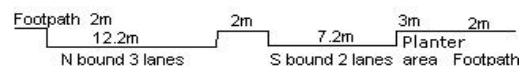
YEAR 2019

COVERAGE (B) STATION 6206

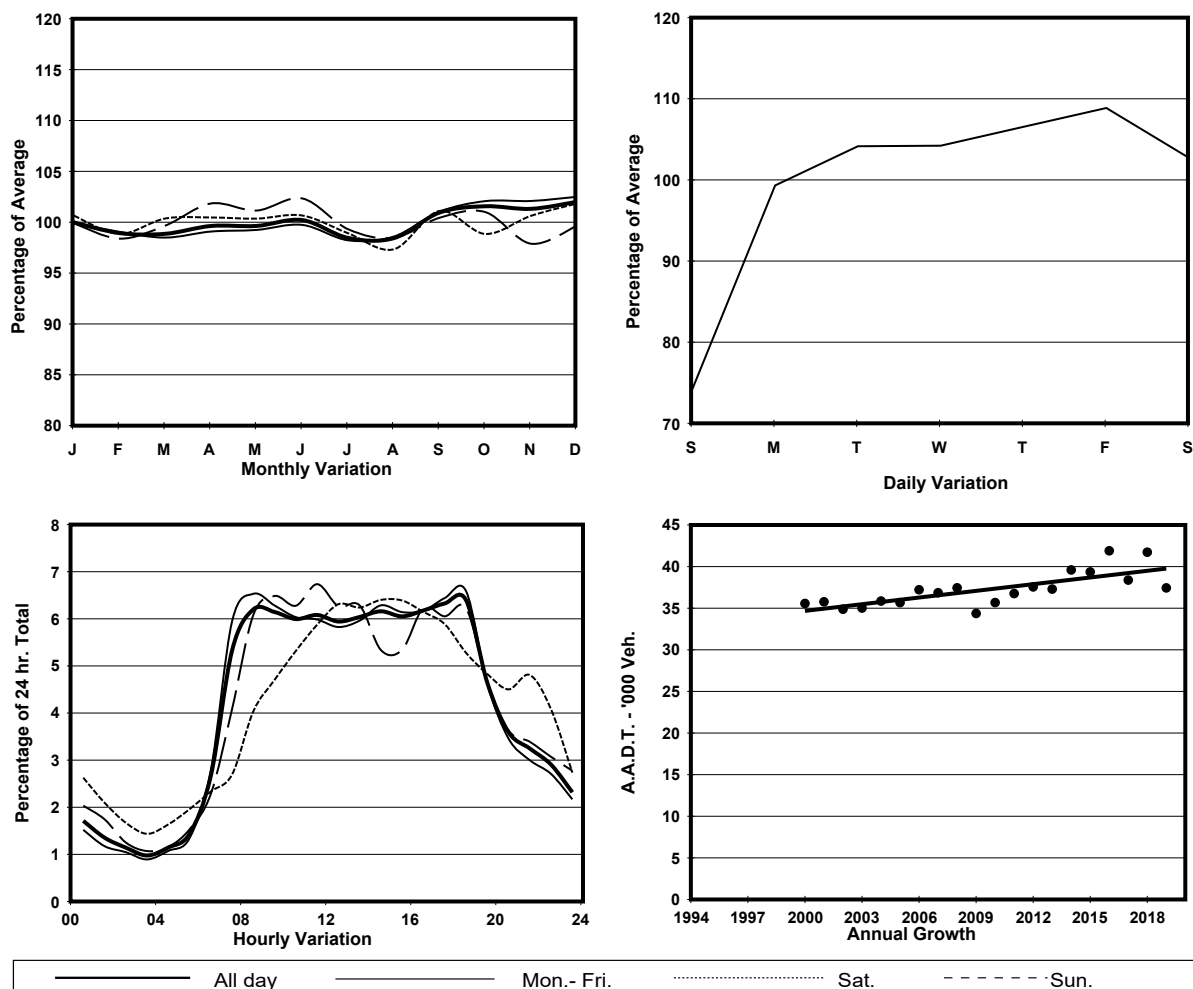
ROAD NETWORK MAJOR

ROAD TYPE PRIMARY DISTRIBUTOR

LINK JOCKEY CLUB RD (from LOK YIP RD to WO HOP SHEK INT)



1. TRAFFIC FLOW VARIATION AND GROWTH



2. TRAFFIC CHARACTERISTICS (BY DIRECTION)

Parameter	All - Day	Mon. - Fri.	Sat.	Sun.
SOUTH BOUND				
A.A.D.T.	18580	19640	19370	14270
R 12 / 24 - %	73.3	74.5	72.6	66.3
R 16 / 24 - %	87.4	88	86.7	84.1
AM Peak Hour	0900-1000	0700-0800	0900-1000	0900-1000
One-way flow at AM peak hour	1130	1300	1250	630
T - % (AM)	-	12.7	-	-
PM Peak Hour	1800-1900	1800-1900	1800-1900	1600-1700
One-way flow at PM peak hour	1220	1340	1180	880
T - % (PM)	-	7.5	-	-
Prop.of commercial vehicles - 16 hr.	-	12	-	-
NORTH BOUND				
A.A.D.T.	18860	20080	19580	13920
R 12 / 24 - %	72.4	73.9	70.3	64.2
R 16 / 24 - %	87.1	88	85.7	82.9
AM Peak Hour	0800-0900	0800-0900	0900-1000	0900-1000
One-way flow at AM peak hour	1210	1380	1280	690
T - % (AM)	-	8.9	-	-
PM Peak Hour	1800-1900	1800-1900	1600-1700	1600-1700
One-way flow at PM peak hour	1170	1270	1250	860
T - % (PM)	-	7.5	-	-
Prop.of commercial vehicles - 16 hr.	-	10.9	-	-

3. OTHER INFORMATION AND COMMENT

4. Vehicle classification and occupancy - Monday to Friday

Time		Class of vehicle									
		Motor Cycle	Private Car	Taxi	Private LB	PLB	Goods veh.		Non Fr. Bus	Fr. Bus	
							Light	M & H		SD	DD
0700-0800	Pro	3.8	42.1	14.0	1.7	1.9	23.6	5.3	4.7	0.1	3.0
	Ocp	1.2	1.3	2.0	9.3	14.9	1.5	1.1	21.0	1.0	25.3
0800-0900	Pro	2.5	52.0	10.3	1.6	1.3	23.3	4.6	2.4	0.1	1.9
	Ocp	1.0	1.3	1.9	2.5	15.1	1.5	1.3	5.4	1.0	23.0
0900-1000	Pro	1.9	42.6	11.9	1.1	1.7	28.1	9.2	1.5	0.1	1.8
	Ocp	1.0	1.4	2.1	1.7	8.8	1.5	1.3	5.9	16.0	20.4
1000-1100	Pro	2.4	37.2	13.1	0.6	2.4	29.8	10.9	1.4	0.1	2.1
	Ocp	1.0	1.3	2.0	2.3	8.6	1.4	1.4	10.9	4.0	13.7
1100-1200	Pro	2.3	39.2	10.8	1.3	1.1	31.6	10.8	0.8	0.1	2.1
	Ocp	1.1	1.4	2.1	1.8	10.4	1.4	1.3	5.0	12.5	16.1
1200-1300	Pro	2.0	37.9	11.3	2.0	3.0	29.8	10.4	1.1	0.1	2.4
	Ocp	1.0	1.2	2.1	5.0	4.4	1.3	1.5	3.2	22.0	15.1
1300-1400	Pro	1.8	39.9	13.1	0.8	3.7	25.3	10.4	2.7	0.1	2.2
	Ocp	1.1	1.5	1.7	1.3	4.1	1.4	1.1	3.8	13.5	10.7
1400-1500	Pro	1.6	39.4	10.3	1.4	1.4	31.9	11.1	1.0	0.1	1.9
	Ocp	1.0	1.3	1.8	1.0	4.9	1.5	1.3	3.8	9.3	15.8
1500-1600	Pro	2.1	40.7	14.4	2.3	1.4	29.2	5.9	2.1	0.1	1.8
	Ocp	1.0	1.3	1.7	6.2	7.5	1.4	1.2	16.8	14.5	16.5
1600-1700	Pro	2.1	42.1	14.9	2.8	0.9	24.5	7.6	3.0	0.1	2.0
	Ocp	1.0	1.4	1.7	4.5	15.0	1.4	1.4	8.9	26.0	20.8
1700-1800	Pro	7.2	35.9	15.3	1.6	1.4	27.5	5.4	2.9	0.1	2.7
	Ocp	1.0	1.4	1.7	4.6	15.8	1.4	1.3	6.9	21.0	24.3
1800-1900 Peak hour	Pro	3.4	59.3	10.7	0.5	1.0	17.5	3.1	2.4	0.1	2.0
	Ocp	1.1	1.3	1.8	2.0	13.2	1.4	1.1	11.0	41.0	22.8
1900-2000	Pro	3.4	61.4	13.5	0.5	1.1	11.9	3.4	2.2	0.1	2.5
	Ocp	1.3	1.4	1.7	1.5	10.0	1.4	1.3	6.8	17.5	16.4
2000-2100	Pro	2.4	65.5	11.9	0.3	1.6	11.1	2.4	1.6	0.0	3.2
	Ocp	1.0	1.5	1.6	1.0	2.8	1.5	1.0	8.3	0.0	14.4
2100-2200	Pro	1.9	55.8	20.9	0.8	0.8	9.5	5.3	1.9	0.2	2.9
	Ocp	1.2	1.3	1.6	2.5	2.5	1.4	1.3	1.8	4.5	12.0
2200-2300	Pro	2.0	55.2	25.4	0.4	1.2	8.9	2.4	0.8	0.0	3.6
	Ocp	1.2	1.5	1.7	1.0	1.0	1.3	1.0	1.0	0.0	9.6
16 hours	Pro	2.7	46.0	13.2	1.3	1.6	23.8	6.9	2.1	0.1	2.3
	Ocp	1.1	1.3	1.8	4.0	8.6	1.4	1.3	9.7	14.3	17.8

Legend: Pro. Proportion of vehicles in % (Sum may not add up to 100% due to figure rounding)*

Ocp. Average occupancy of vehicles including both driver and passengers*

M&H Medium and Heavy

* All traffic data are collected from combined bounds